



Summer • Issue: 01 • May, 2022

Providing a record of and pertinent information about The Louisville Foundation at Old Crossing Red Lake County

in this issue...

- Report on responses to the survey
- Future of Historic Bottineau Homestead property
- Oxbow Garden

BRIEF HISTORY OF THE LOUISVILLE FOUNDATION AT OLD CROSSING

Since its foundation in 2017, the year the foundation was recognized as a 501(C) (3), The Louisville Foundation has sponsored activities in nature journaling, community gardening, arts and heritage and spring taping, at the seventy acres it manages at the oxbow area located just northwest of the lower park at Huot and in Red Lake Falls.

UPCOMING EVENTS

Mark Your Calendar! The Oxbow has a number of events happening this summer-and we would love to see you!

June 24 from 4-6 PM
Bottineau Homestead
in Red Lake Falls, MN

Open homestead with food and beverages. Program to delight, inform and discuss questions will begin at 4:30 PM.

Volunteers most welcome at the homestead from 2-5 PM Saturday June 18 to prepare to welcome visitors on June 24

Contact Virgil Benoit at 1-701-213-5598 with questions and/or suggestions.

July 29-31, 2022
SummerFest
in Red Lake Falls, MN

Bottineau Homestead Tour and Oxbow Parade Float

Join us at the Bottineau Homestead for a tour of the historic property during SummerFest at a time to be announced, and look for our float in the SummerFest parade on July 30th!



September 17, 2022
Louisville Days
in Huot Park

The Oxbow will be hosting Louisville Days at its Community Garden in Huot, MN. A 30-mile bicycle ride (shorter routes will be provided as well) will begin at 9:00 A.M. with Pumpkin Painting by Celeste Hoffman to follow. This event will be fun for all ages!

Register for the bicycle ride at <https://www.eventbrite.com/e/louisville-days-bicycle-ride-tickets-358863068097>

Bike Ride: \$30.00
(t-shirt included)
Pumpkin Painting: \$5.00
Luncheon: Free-will offering

Call or Text Max LaCoursiere at (218) 289-5973 for more information on the bike ride!



Mission Statement: To develop a greater awareness of the local natural environment and human culture through programming in arts, education, and enterprise

LOOK AHEAD

The Fall and Winter schedule will contain mini courses and programs inspired by responses to the survey of uses of the Bottineau Homestead Learning Center. Details will follow in our fall newsletter.

Report on the responses to the survey entitled *Uses of the Bottineau Homestead as a learning center*

by Max LaCoursiere

Spring is a time of growth, new beginnings, and rebirth, and it has been no different for the Louisville Foundation in 2022. Before the snow thawed and the flooding began, the Foundation published a survey to explore community interest in using the Bottineau Homestead as an educational and cultural center. The survey, which was circulated by paper copy and online, can be found at <https://www.surveymonkey.com/r/N7Y2X66>. The survey was open to all and was promoted throughout Red Lake County and the surrounding communities.

The survey encouraged respondents to indicate their interests through a multiple-choice list and to respond in writing to specific questions. All told, the Foundation received approximately 60 responses.

Multiple Choice Responses

The survey provided fifteen different topics for survey-takers to select from. Of those fifteen topics, five stood out as being of interest to those that took the survey. 78% of respondents selected the natural environment; 78% also selected the history of settlement as an interest. Appreciation of nature was a not-so-distant third, with 67% of respondents selecting that as a personal interest. 65% of those who responded were interested ways people survive off the land, and 60% of respondents were interested in learning about indigenous cultures. Overall, the multiple-choice responses were diverse in their support of educational and learning opportunities.

Written Responses

Survey takers were given the opportunity to series of long-form written responses to expand on their answers in the multiple-choice selection portion the survey. The survey utilized eleven long-form questions where survey takers could respond in their own words. This portion of the survey was highly informative of the community's interest in using the Bottineau Homestead property as a learning center. Specific responses were varied—but the response can fairly be placed in one of the following categories: **(1) Educational**; **(2) Recreational**; **(3) Commercial**; and **(4) Environmental**. Each individual who responded was not put into one these categories. Rather, it was common that each individual who responded had answers that were relevant to multiple, if not all, of those categories.

(1) Education. Of the survey takers, a majority of them indicated interest in educational endeavors. Whether that was learning about wildlife or the local ecosystem, the responses were positively in favor of furthering educational opportunities. Specific responses recommended opportunities for: sharing cultural cuisine; broadening relationships with regional Native American Tribes; hunting and fishing classes; learning about local heritage; and gardening / foraging classes—just to name a few.

(2) Recreational. Just as participants were invested education, they were equally invested in recreation. Many participants prioritized greater access to hiking, skiing, and snowshoeing trails; and many were highly motivated by more water access points for fishing and boating. With Red Lake County being one of the only counties in Minnesota without a lake, it was not a surprise to see that survey takers were interested in the Bottineau Homestead as another point of access for canoeing and kayaking.

(3) Commercial. While the survey was not limited to residents of Red Lake County, many of those who answered shared concerns for bringing more people and opportunities to area businesses. Those concerns are also shared by the Foundation. The Foundation Board hopes that as the Bottineau Homestead project continues to grow, the opportunities that the Bottineau Homestead provides are complementary to the needs and concerns of area businesses.

(4) Environmental. As a community, Red Lake County relies on good weather, fertile soil, clean water, and hard work to support the agricultural economy. Responses to the survey acknowledged the importance of conservation and reinvestment into clean water and sustainable natural resources. The quality of the soil and water are essential to supporting life and the economy throughout the region, and the Bottineau Homestead can be used to further educate, learn, and reinvest in a sustainable environment.

In closing, the survey showed healthy support and interest in the Bottineau property and what it can provide for the community. The survey is still live, and the Foundation encourages those who have not taken the survey to please do so. For questions about the survey or the Bottineau Homestead project, please contact Max LaCoursiere at max.lacoursiere@gmail.com.

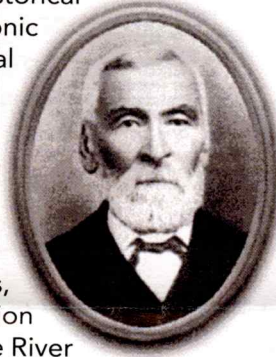


Street to Bottineau homestead is the first street going south after the entrance to the golf course. The homestead is about 1/2 a mile east from where you turn off of highway 32.

The future of the historic Bottineau Homestead property soon to be managed by the Louisville Foundation

The Bottineau Homestead Property

Pierre Bottineau was a regional pioneer in many endeavors, and his family homestead adjacent to Red Lake Falls may soon become available for community access and development as a historical learning center. As social "networking" and electronic learning progress with our next generations, "real life" sites for learning provide a balance with excellent human interaction and preservation of the rich local heritage. The early settler days and local development are an important part of local heritage. The Bottineau Homestead is an excellent location for public interaction, "on-site" nature and history experience for small groups, educational outings, and group social interaction with historical influence. The developing Red Lake River Corridor includes the "Bottineau Trail", accesses to the two significant rivers of early travel and commerce, and family and group camp, canoe, fish, hike, bike, and natural educational activities for continuing generations. The Bottineau Homestead Property as a "Learning Center" can be an educational, social, and historical improvement to the community and continuing its heritage through future generations. We, as community and local County residents, should support this opportunity.



Bottineau house which stood on homestead until the 1950s. Pierre Bottineau 1817-1896

Uses of the BHLC (Bottineau Homestead Learning Center) were the focus of the Foundation's first public meeting held in the Red Lake Falls Community Hall April 27, 2022.



Corky Kleven, RLF resident

(Editors' note "As a boy Corky played along the banks of the Clearwater River which border the homestead as well as in the Bottineau house which stood until the 1950s overlooking the river.)

The band Blow Winds set the spirit and tone of the meeting while speakers Tanya Waldo, Manager of Soil and Water Conservation Red Lake District. and Frankie Latimer, Red Lake County 4H director, defined how the proposed center could enhance learning opportunities throughout the area, especially within the entire county of Red Lake. Both speakers gave examples of how the natural, undeveloped environment of the Bottineau homestead could be a host site for the kinds of programs they are familiar with to educate people of all ages and of interest to the county and the surrounding area. All of the content of their talks was set to a backdrop of collaborations with community leaders.



Tanya Waldo, keynote speaker at April 27 meeting receives a sweat shirt with the wording "Ask me about the BHLC"



Francesca Latimer, speaker at April 27 meeting accepts a BHLC sweatshirt.



Members of "Windblown" are from left to right James Schaar, Rob Conwell, Keith Leines, and Bruce Piersol. The musical group opened the meeting and kept all on tune thereafter during our memorable meeting of April 27.

The Oxbow
PO Box 67
Red Lake Falls, Mn 56750

GRAND FORKS ND 582

15 JUN 2022 PM 1 L



Dick Bernard
6905 Romeo Road
Woodbury, Mn 55125

OXBOW GARDEN

The Oxbow garden is a community garden located west of the north park at Old Crossing Treaty Park. Near May 15 we began planting seeds such as peas and beans. Soon after that we planted 20 mature grape vines and about 50 rhubarb plants which were given to the Oxbow garden by the Sisters of Mount Saint Benedict from their garden. Of late, we have been planting tomatoes, peppers and so forth. Volunteers who help maintain the garden may share in the produce as it matures.

Donors of \$20 or more, beyond membership dues, receive an 8oz bottle of our own Oxbow syrup which we make from sap we draw from boxelder trees at the oxbow each spring. Volunteers always welcome. Memberships may be paid at any time of the year but are due in July of each year. Membership benefits include the quarterly newsletter and pride in what we are doing together.



Left to right Max LaCoursiere and Peter Mattson at the Oxbow community garden plant mature grape vines donated by Sisters of Mount Saint Benedict from their garden in Crookston



From left to right Peter Mattson, Ashton Hoffman and Che Hoffman dig holes at the oxbow garden in which they will plant rhubarb which the Sisters of Mount Saint Benedict donated to the oxbow community garden.

Send membership dues to:

The Oxbow
PO Box 67
Red Lake Falls, MN 56750



Memberships help pay for the cost of our programs and projects.

Individual memberships
\$10

Household
\$15



8 oz bottles of Oxbow syrup, given out in appreciation as described above.